

For faster, simplified
and more accurate
chemical analysis

Technic EBA
Electroplating Bath Analyzer



Technic EBA

Electroplating Bath Analyzer

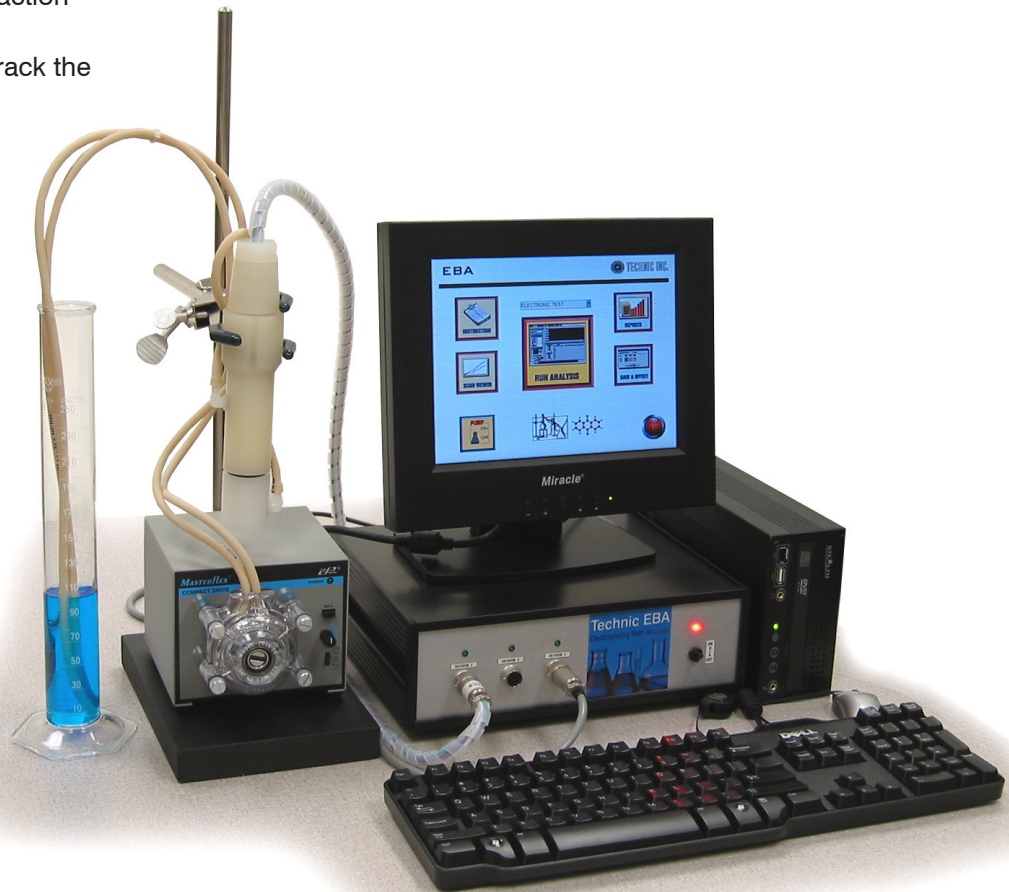


- Precisely measures low-level organic additives
- Reduced sample preparation and analytical time
- Modular/Bench-Top configuration
- Greater accuracy and consistency than CVS
- Customized analysis available
- Global technical support and expertise

Technic's EBA provides an uncomplicated, trouble-free and accurate answer for analysis of your electroplating solutions. The EBA offers customers a patented combination of processing technique, software and hardware that saves time and effort and resources while obtaining greater consistency and accuracy in analytical results.

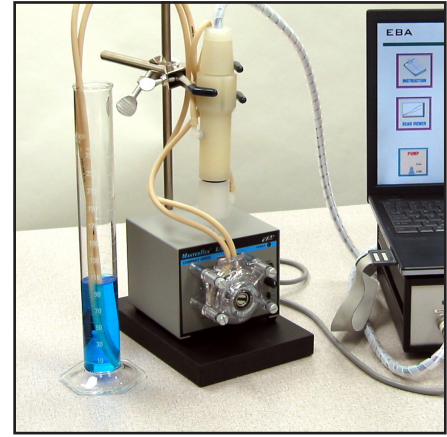
The basic EBA unit consists of:

- A peristaltic pump for sample flow
- A probe where the sample is electrolyzed
- An EBA processor that controls & measures the electrochemical reaction
- A CPU to report and track the results in easy to read tables & charts

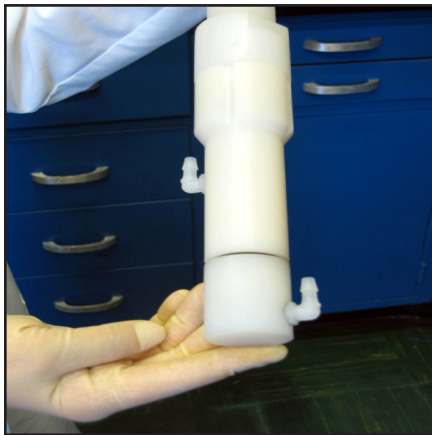


Method: The Technic EBA is the only commercial instrument that utilizes a combination of AC and DC voltammetry with state-of-the-art chemometric approach. Chemometrics is a chemical discipline that uses mathematics, statistics and formal logic to select optimal experimental procedures that provide maximum relevant chemical information by analyzing the data.

By utilizing both AC & DC a tremendous number of potential parameters become available that can be controlled to identify and precisely measure specific organic and inorganic levels in electroplating solutions. Chemometrics makes the use of this data possible by extracting only significant information eliminating interferences and matrix effects that can otherwise skew results.



- Precise analysis specific for each component
- One sample can be used for all organic & most inorganic constituents
- No additions during typical analysis (eliminates extra reagents)

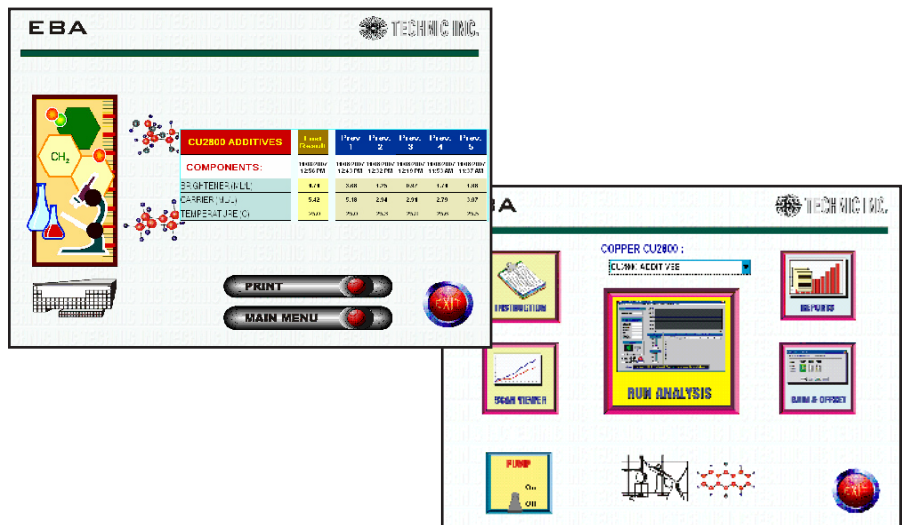


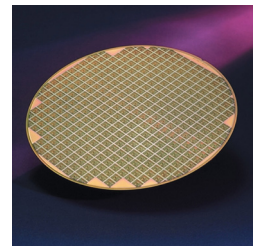
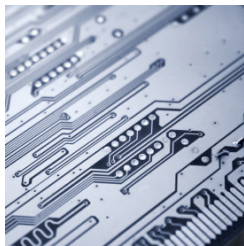
Hardware: The Technic EBA probe has no moving or consumable parts and virtually eliminates the excessive probe maintenance required by competitive instruments. The patented design does not require a classical reference electrode and the automatic sequence creates a clean reproducible working electrode for each measurement. This improves analytical consistency, reduces maintenance, and eliminates down time as well as costs due to worn electrodes.

- Reduced down time and maintenance
- Consistency through design
- Extended probe life

Software: The software does all the work. The technician measures the sample by utilizing a simple point & click program and returns minutes later to a complete readout of the current conditions of the electroplating bath. The EBA software also stores and produces reports on each analysis performed.

- Clear, easy to follow program
- Reduced analytical cost
- Consistency through automation





Technic offers a full range of advanced electroplating products to the printed circuit board, solar, connector and semiconductor markets. Our products are carefully engineered for high throw, high speed and developed to meet the specific physical properties, characteristics and current demands of each industry such as;

- High throw DC Copper that yields PPR results
- Low stress high speed Copper for Solar applications
- Whisker free Tin for connectors

Technic's electroplating products have been designed to work in conjunction with the EBA to provide a superior combination of control with advanced chemical technology from a proven leader.



47 Molter Street, Cranston, RI 02910
Tel: 401-781-6100
Fax: 401-781-2890
info@technic.com
www.technic.com