

Technibrite HT 1000

High-Performance, Mirror Finish Tin

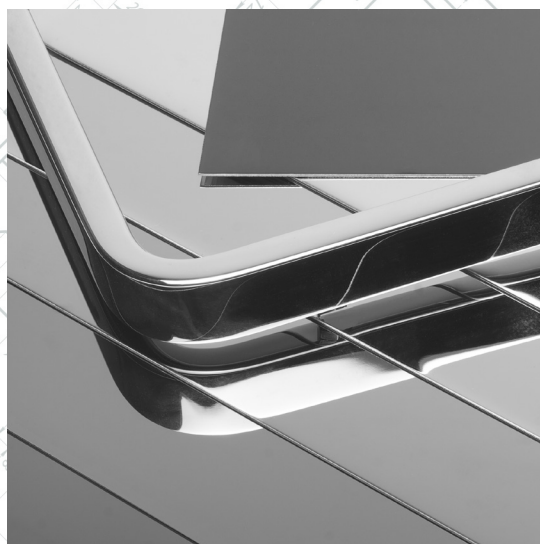
**TECHNIC**www.technic.com

Bright Tin-Acid for Rack and Barrel

Based on a cost-effective sulfuric acid electrolyte, **Technibrite HT 1000** will improve the appearance and performance of bright acid tin-plated parts, especially those with complex geometries that often show dull deposits in low current density areas.

Technibrite HT 1000 produces mirror-bright deposits at process temperatures as high as 35° C, and can be run without a chiller. It also operates reliably with tin concentrations up to 50 g/l, effectively minimizing the need for bath dumping.

Cathode efficiency is 30% higher than conventional bright tin processes, dramatically reducing cycle times needed to attain target deposit thickness. The productivity from reduced cycle times can allow for an immense daily workload to be processed.



Benefits

- Reduced operating costs
- Exceptionally long bath life with proper care
- Double the productivity without capital investment
- Uniform deposits over a wide current density range
- Improved quality with a mirror-bright deposit
- No loss of brightness at elevated temperatures
- No effects with rising tin metal
- No bailout to maintain tin concentration

Features

- NPE-free and fully RoHS compliant
- High cathode efficiency
- Smooth, non-brittle deposit
- Excellent throwing power
- No chilling required
- Excellent solderability
- Can be run in medium speed reel-to-reel
- Fully analyzable additive system



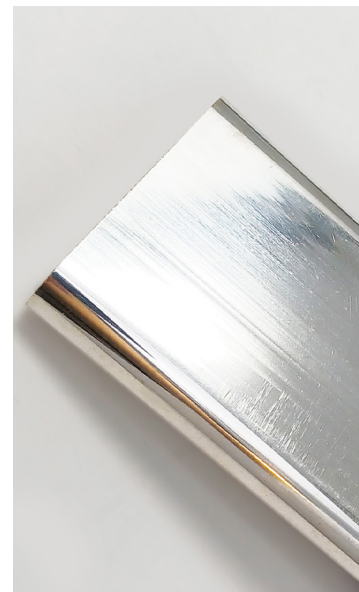
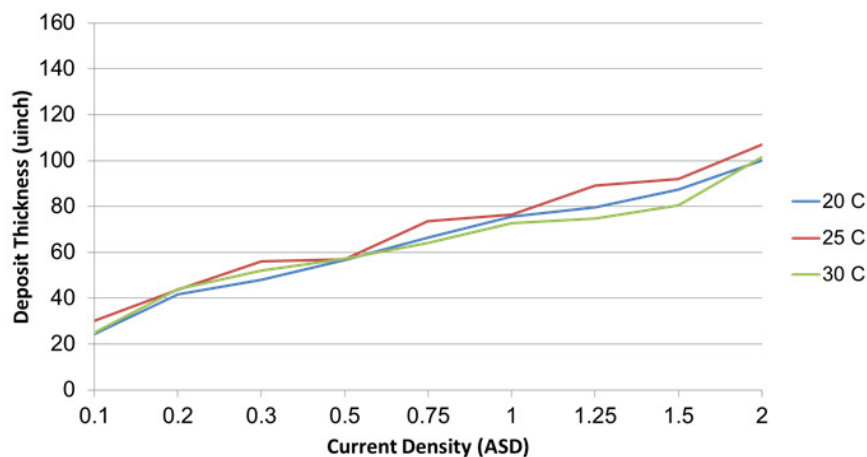
Technibrite HT 1000

Product Specifications

Parameter	Rack Application	Barrel Application
Tin Metal*	2.0 – 6.7 oz/gal 10 - 20 g/l	1.3 – 4.0 oz/gal 15 - 50 g/l
Sulfuric Acid	8 – 13% v/v	8 – 13% v/v
TechniBrite HT 1000 Wetter	5 – 10% v/v	5 – 10% v/v
TechniBrite HT 1000 Brightener	1 – 3% v/v	1 – 3% v/v
TechniBrite HT 1000 Booster	0.05 – 0.2% v/v	0.05 – 0.2% v/v
Technistan Antioxidant	1.5 – 4.5% v/v	1.5 – 4.5% v/v
Operating Temperature	61 – 90° F (16 - 35° C)	61 – 90° F (16 - 35° C)
Cathode Current Density	5 – 30 ASF	3 – 20 ASF
Anode to Cathode Ratio	1:1 minimum	
Agitation	Constant solution movement coupled with cathode movement	
Cathode Efficiency	80 – 95%	
Deposition Rate	Dependent on application	

* Tin metal concentration can rise to 50 g/l without adverse effects.

Technibrite HT 1000
Effect Temperature @ 30 g/L Tin Concentration



**What our
Technibrite HT 1000
customers say:**

“We doubled our throughput without any capital investment”

“We are running without a chiller and the brightness is the same”

“I’ve never seen a brighter tin deposit”

“I can analyze everything myself”

“I don’t want my competitors to know I’m using it”



TECHNIC

www.technic.com