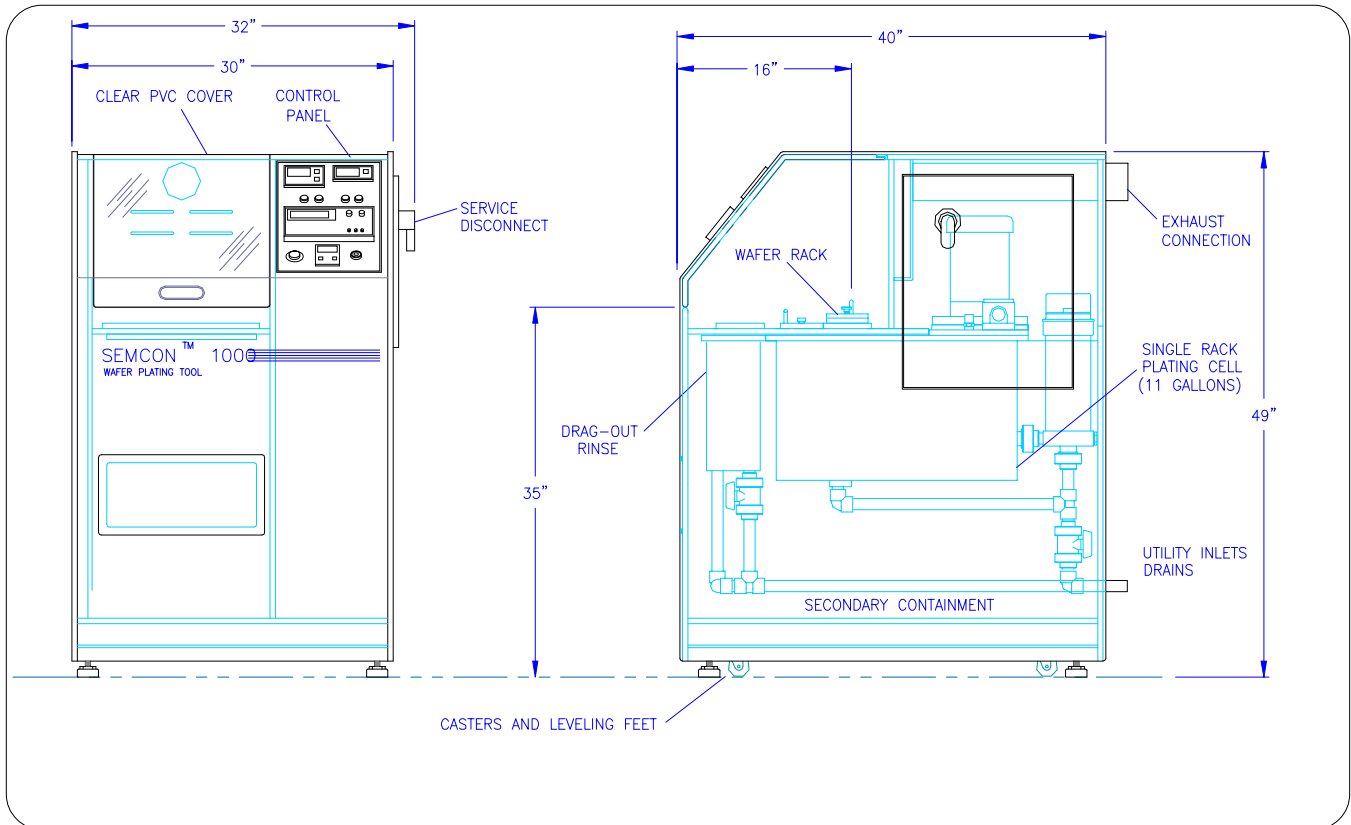




SEMCON 1000

PLATING & ELECTROFORMING FOR WAFER APPLICATIONS



The **SEMCON 1000** is designed specifically for research and development (R&D) and low volume applications. The tool features a single plating cell along with a dragout rinse cell, to enable plating/electroforming of wafers or discrete parts (slivers, etc.). Typical applications include plating for MEMS, MOEMS, ICs, etc., on silicon, gallium arsenide, and similar glass-type substrates.

The **SEMCON 1000** is modeled after our highly successful SEMCON 2000 series. A similar modular process cell and chassis construction is used for easy and effective maintenance and changeovers. The tool is self-contained, constructed of white polypropylene with a clear PVC process cover designed to meet class 1000 clean room specification. Plating cell components include heating, temperature control, low level safety device, pump and filter, DC power supply, and plating rack.

Technic Inc. is a full service provider, with a complete line of proprietary plating solutions and processes. Our development laboratory in Anaheim, California offers wafer sampling and customized process development. With over 50 years of plating experience and unparalleled support and service for equipment and chemistry, Technic offers the unique ability of true, “one stop shopping”.

SEMCON 1000

Feature	Description
Wafer Size Capacity	Single Wafer, Up to 8" (200mm) Discrete Parts Plating with Custom Fixtures Available
Plating Cell Construction	Polypropylene
Liquid Volume Capacity	Approximately 11 Gallons
Filtration	Polypropylene Pump/Filter 10" DOE 1 micron pleated filter element On/Off Control with Potentiometer Speed Control
Heating	Electric Immersion, 1000 Watts, Up to 70° C Capacity Digital Display Control
DC Power Supply	Straight DC or Pulsed Output Available
Anodes	Insoluble Platinum-Clad Mesh Anodes (Soluble Anodes Available) Adjustable Anode-Cathode Distance
DI Water Consumption	2 GPM (Maximum) at 30 PSI
Ventilation (Exhaust)	100 CFM at 2" Water Column
Power	115 VAC, Single Phase, 60 Hz, 20 Amperes
Overall Size	32" L-R x 40" F-B x 49" High

Engineered and Manufactured by:
Surface Finishing Technologies, Inc.
A Division of Technic, Inc.
12200 34th Street North
Clearwater, FL 33762

info@sft-technic.com
TEL (727) 577-7777
FAX (727) 578-7664