

For immediate release

June 2017

New Product Announcement
Experimental Silflake[®] 693 & 793

Woonsocket, RI – Technic EPD has announced the release of Experimental Silflake[®] 693 and 793. These are new flakes within a family of similar flakes. This family is designed for use in a wide variety of conductive adhesives, die attach, and other polymeric applications. The flakes were designed to exhibit a low viscosity and medium thixotropic index (TI) in polymeric systems.

- ☉ **Flakes should exhibit a low viscosity and medium TI**
- ☉ **Family has similar flakes with different functional surfactants**
- ☉ **Applications: conductive adhesives, die attach, & polymeric applications**

Typical SEM

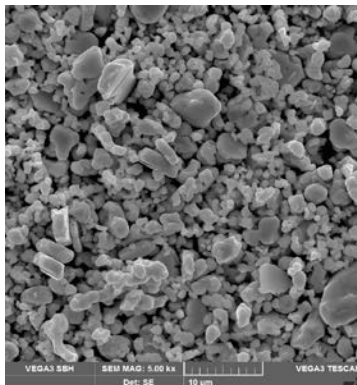


Figure 1: Experimental Silflake 693

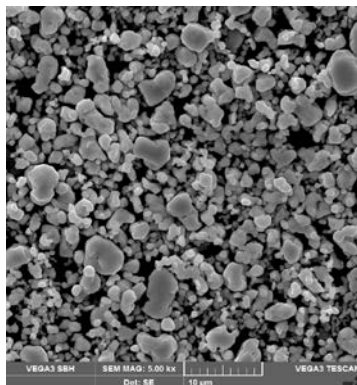


Figure 2: Experimental Silflake 793

Typical Physical Data

	SF 693	SF 793
D50	3.5 µm	4.0 µm
Tap Density	5.6 g/cm ³	5.2 g/cm ³
Specific Surface Area	0.3 m ² /g	0.3 m ² /g
Weight Loss 538 ^o C	< 0.6 %	< 0.1 %

Learn more at www.technic.com or contact us at (401) 769-7000.

[Customer Satisfaction Survey](#)
[Technology Support Hub](#)
[Mazerustar Mixers](#)