




For immediate release

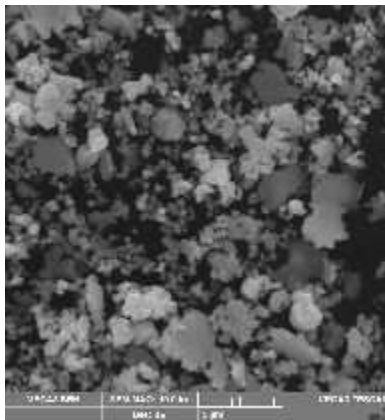
February 2018

New Product Announcement
Experimental Silflake 661

Woonsocket, RI – Technic EPD has announced the release of Experimental Silflake 661. The flake is mechanically flattened with a bi-modal particle size distribution. The residual lubricant works well in most polymeric applications. The flake has been developed for use in a variety of applications including conductive adhesives, die attach, and other polymeric applications.

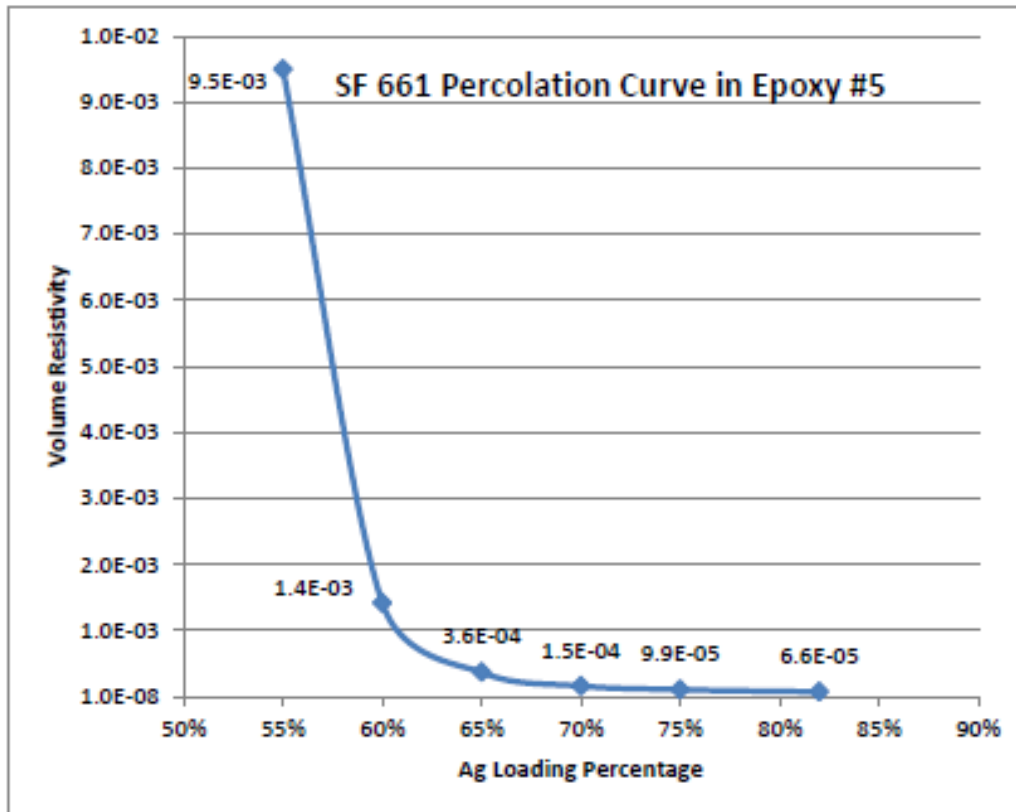
-  **Residual lubricant that works well in most polymeric systems**
-  **Applications include conductive adhesives and die attach**
-  **Bi-modal particle distribution**

Typical SEM



Typical Physical Data

Apparent Density (g/in ³) (1)	20 - 30
Tap Density (g/cm ³) (2)	2.5 – 3.5
Specific Surface Area (m ² /g) (3)	1.0 – 1.5
D50 (μm)(4)	2.5 – 5.5



* Technic's test vehicle, Epoxy #5, consists of Bisphenol F, diaminodiphenyl sulfone cure, reactive diluent, and a coupling agent

About Technic

Technic Inc. is a Rhode Island based, privately held corporation with over 900 employees worldwide. For over 70 years, Technic has been a global supplier of specialty chemicals, custom finishing equipment, engineered powders, and analytical control systems to the electronic component, printed circuit board, semiconductor, industrial finishing and decorative industries. Technic is also a major supplier of engineered metal powders to the solar industry.

Learn more at www.technic.com or contact us at (401) 769-7000.

[Customer Satisfaction Survey](#)

[Mazerustar Mixers](#)